



TOWN OF MARBLEHEAD

Board of Health

Todd Belf Becker, Chair
Helaine R. Hazlett
Michelle Gottlieb

(781) 631-0212

7 Widger Road

Marblehead, MA 01945

Andrew Petty, Director

MARBLEHEAD CASE REPORTING

Case Count

The Marblehead Health Department will make weekly updates on Friday, of confirmed cases, January 22, 2021.

Confirmed cases (recent guidance categorizes all confirmed or presumptive positive cases as positive): **919**

(January 8, count was 789) (January 15, count was 863)

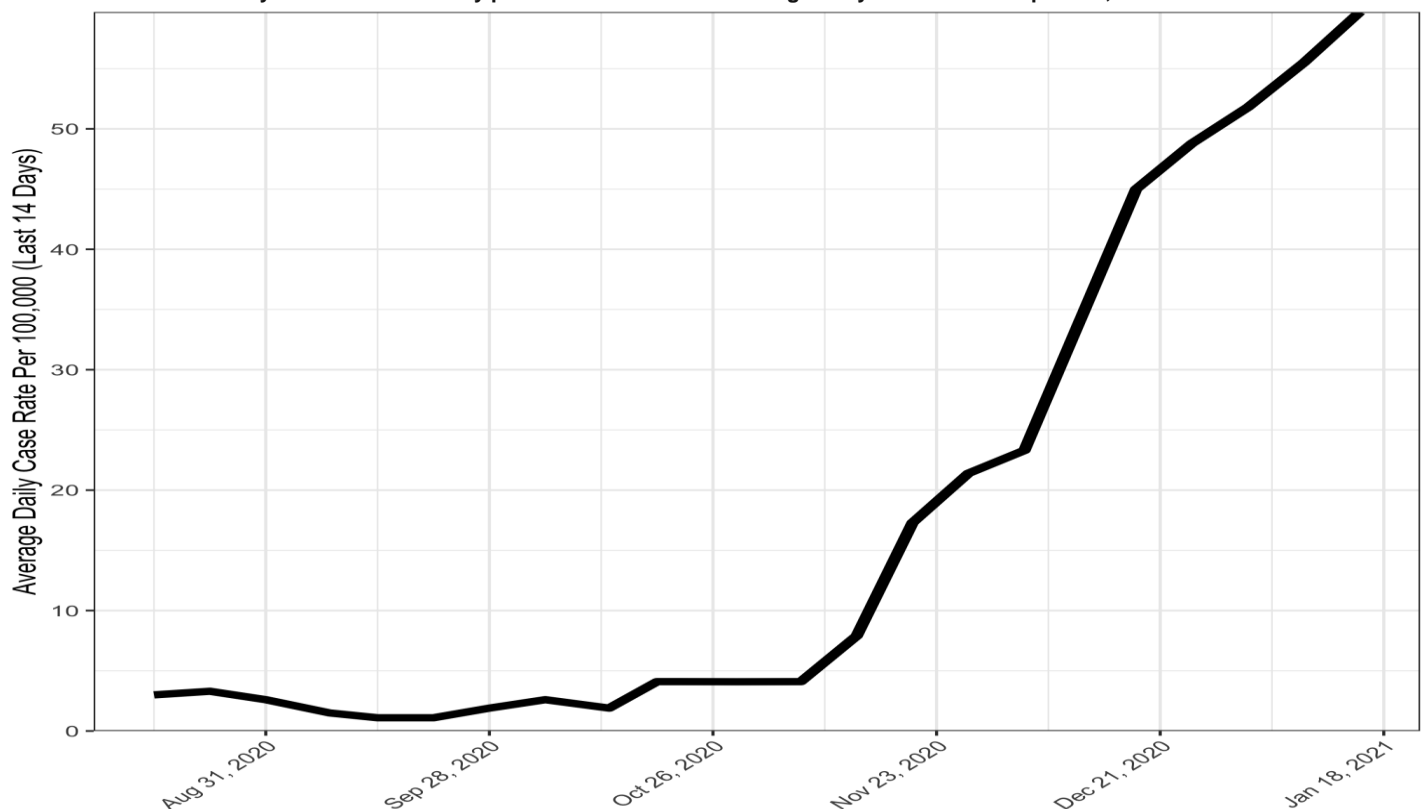
Active cases: **72**

Confirmed deaths: **31**

27 28 10 14 20 13 9 9
0-19 years 20-29 years 30-39 years 40-49 years 50-59 years 60-69 years 70-79 years 80+
Total Cases by Age Group from 1/7/2021-1/21/2021

Average Daily Incidence Rate per 100,000 (Last 14 Days)	Relative Change in Case Count	Total Tests	Total Tests (Last 14 Days)	Percent Positivity (Last 14 Days)	Change in Percent Positivity
54.8	Higher	29055	4098	4.25%	Lower

We are currently a Yellow Community per the Massachusetts Average Daily Incidence Rate per 100,000 Color Calculation





TOWN OF MARBLEHEAD

Board of Health

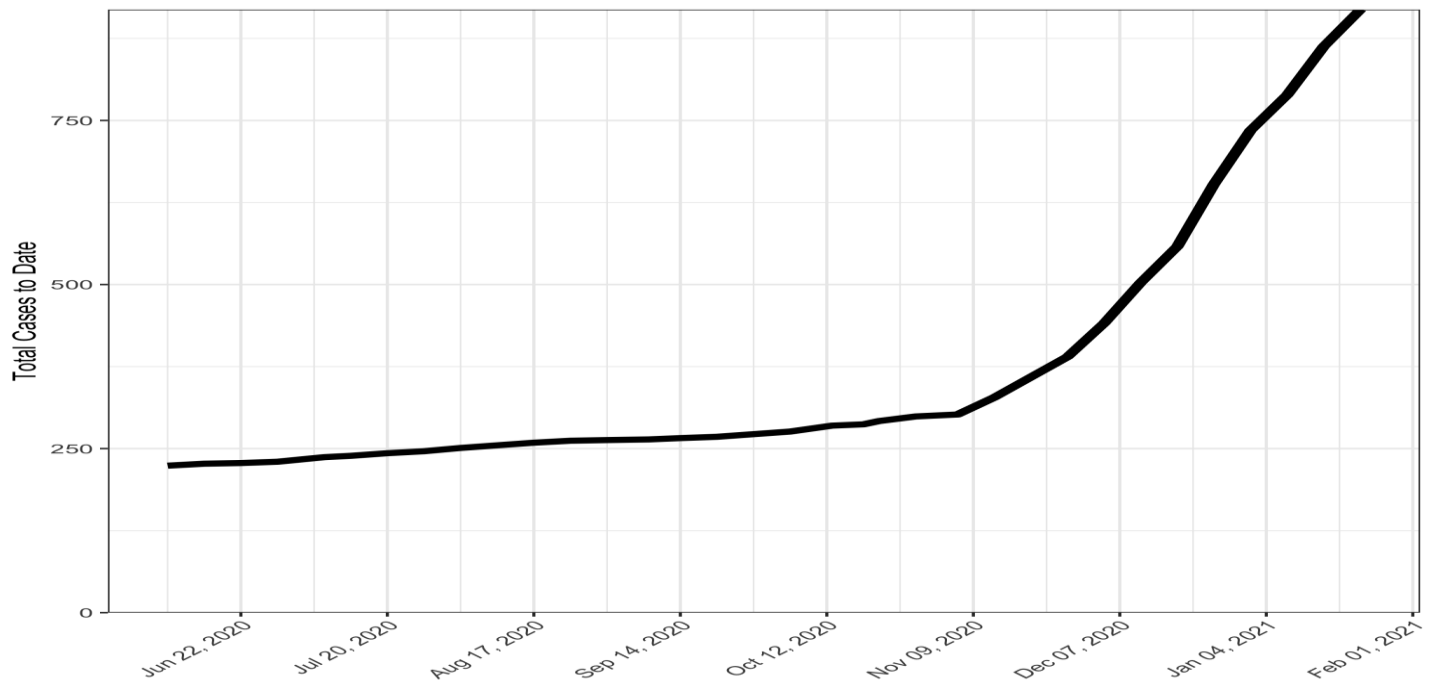
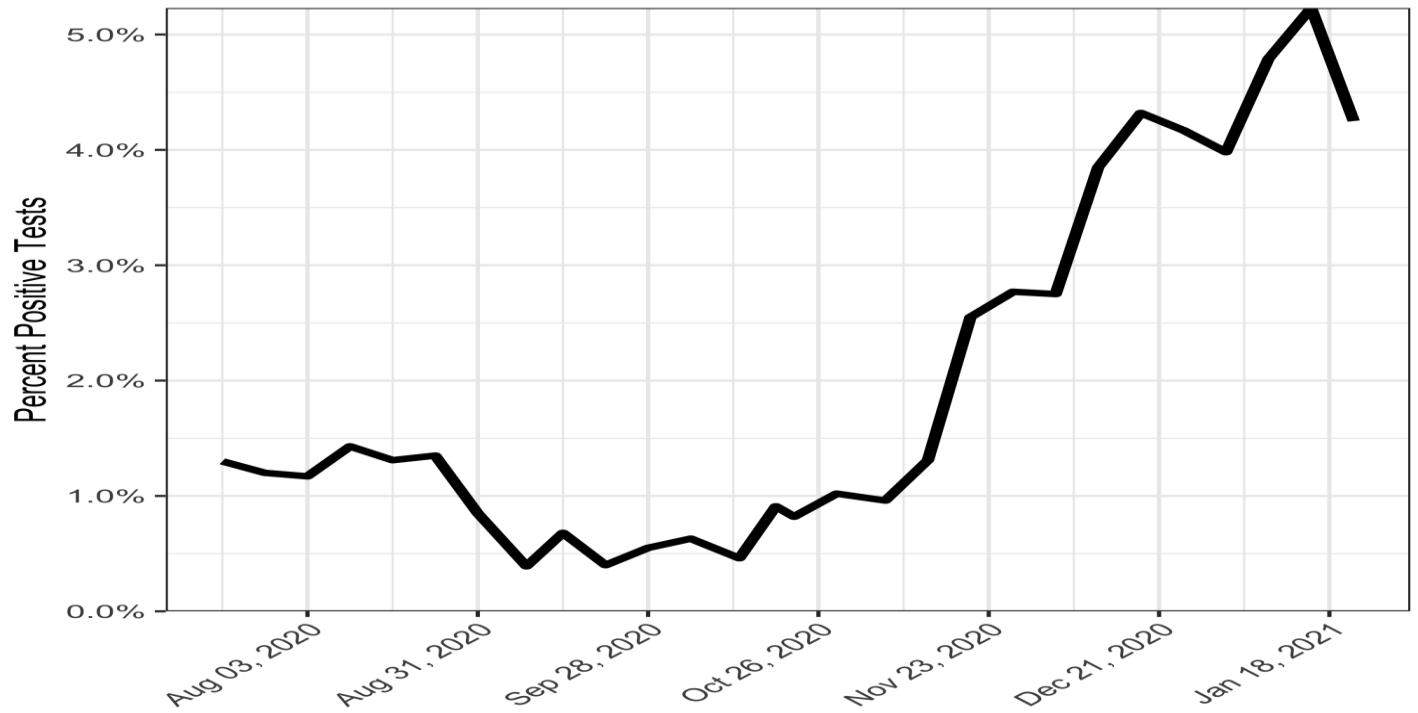
Todd Belf Becker, Chair
Helaine R. Hazlett
Michelle Gottlieb

(781) 631-0212

7 Widger Road

Marblehead, MA 01945

Andrew Petty, Director





TOWN OF MARBLEHEAD

Board of Health

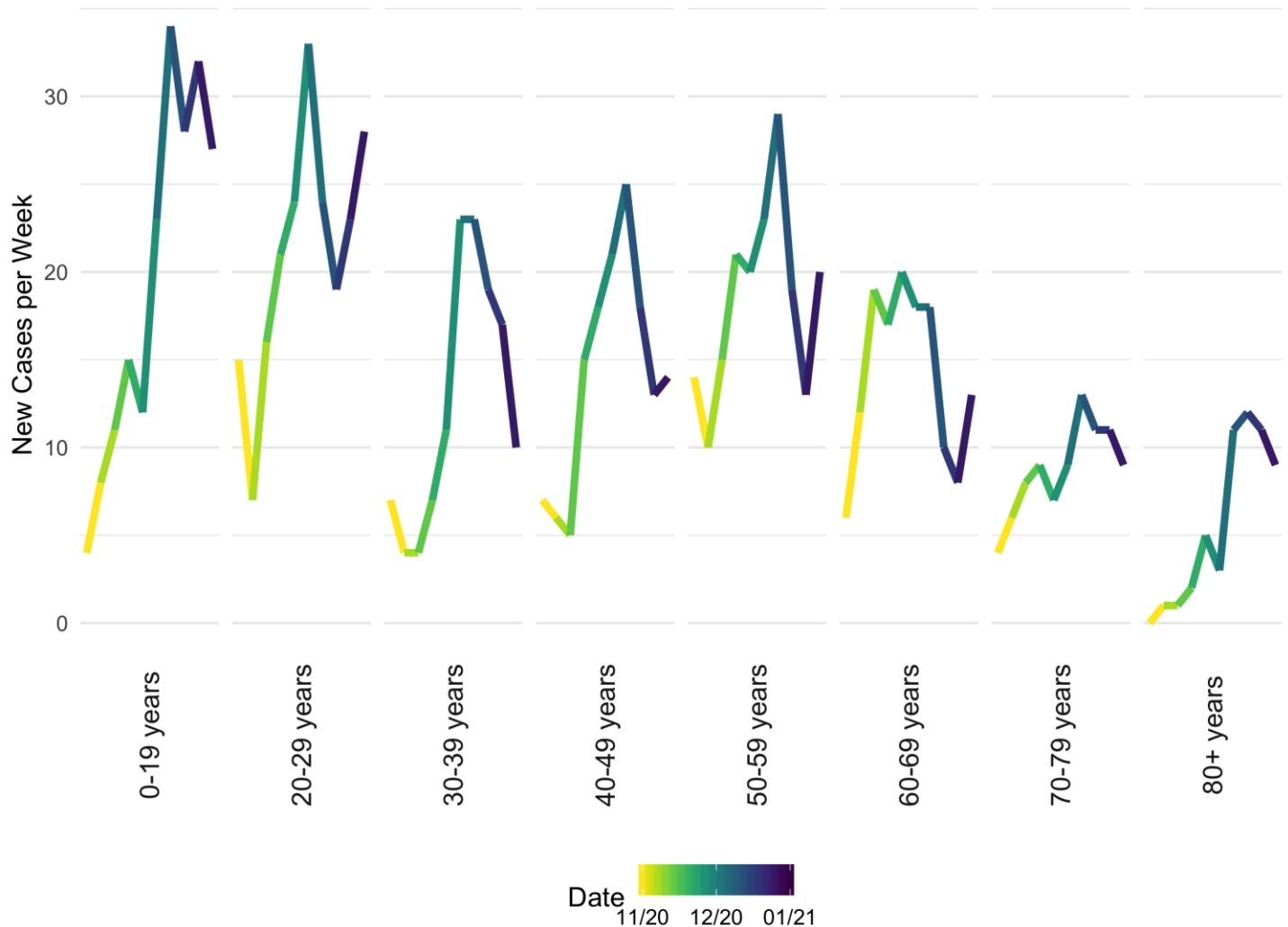
Todd Belf Becker, Chair
Helaine R. Hazlett
Michelle Gottlieb

(781) 631-0212

7 Widger Road

Marblehead, MA 01945

Andrew Petty, Director



Marblehead Health Department (MHD) data regarding case counts come directly from Massachusetts Department of Public Health (MDPH) and their surveillance system (MAVEN). We use the language and terminology per the Centers for Disease Control and Prevention (CDC) guidance, and **recent guidance categorizes all confirmed or presumptive positive cases as positive.**

Social gatherings are contributing to these increases. Transmission is occurring in homes as well as in the work place. 14.58% of the 919 confirmed cases and 96.667% of the reported coronavirus-related death were either residents or staff members at one of Marblehead's long term care facility.

Please remember that all persons in Massachusetts over the age of 5 are required to wear a mask or face-coverings over their mouth and nose when in a public location, whether indoors and outdoors. Public locations include any place open to the public including, without limitation, grocery stores, pharmacies, and other retail stores; public transportation, taxis, livery, and other ride-sharing vehicles, public streets and ways, and any location that hosts indoor and outdoor events and performances. Masks or cloth face coverings are also required when in a carpool with non-household members'.



TOWN OF MARBLEHEAD

Board of Health

Todd Belf Becker, Chair
Helaine R. Hazlett
Michelle Gottlieb

(781) 631-0212

7 Widger Road

Marblehead, MA 01945

Andrew Petty, Director

COVID-19 cases and hospitalizations continue to rise in Massachusetts. Social gatherings are contributing to these increases. Left unchecked, the current COVID-19 case growth poses a risk to our healthcare system.



Massachusetts Department of Public Health | COVID-19 Dashboard

Hospitalizations from COVID-19

Released on: January 20, 2021
Data as of: January 19, 2021
Caution: recent data may be incomplete

Navigation

Today's Overview

Overview Trends

COVID-19 Cases

COVID-19 Testing

Hospitalization

COVID-19 Deaths

Higher Ed & LTCF

Patient Breakdown

City and Town

Resources

Data Archive

Hospitalizations

There are **2,209** patients hospitalized for COVID-19.

ICU & Intubated Patients

There are **444** patients in Intensive Care Units (ICU) and **299** patients are intubated.

Average Age of Patients

The average age of patients who were hospitalized for COVID-19 was **71** years old.

Select to switch hospital visualizations:

Hospitalization Detail

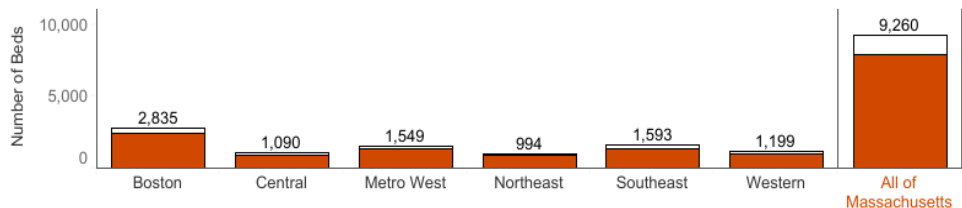
View availability by date
1/19/2021

Occupied beds

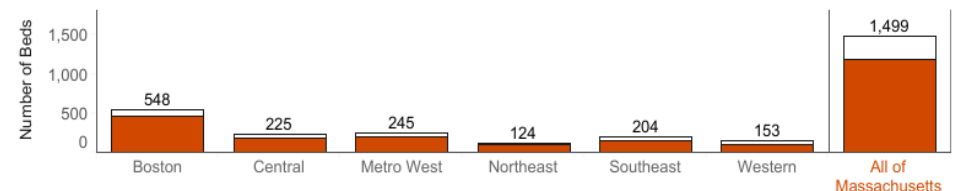
As of today, **86.0%** of medical/surgical beds are occupied and **79%** of ICU beds are occupied.

There are currently **56** beds occupied through alternate medical sites.

Available and **occupied** medical/surgical (not ICU) beds by region



Available and **occupied** ICU beds by region



For purposes of this reporting, "confirmed" are cases with a PCR test. All data included in this dashboard are preliminary and subject to change. Created by the Massachusetts Department of Public Health, Bureau of Infectious Disease and Laboratory Sciences, Office of Integrated Surveillance and Informatics Services.

It is critically important that everybody follows the steps listed below to protect lives and to preserve the capacity of our acute care hospitals and other healthcare systems.

- Stay home between the hours of 10pm-5am.
- Between 5am-10pm, only leave home to go to work or school or for essential needs such as seeking emergency medical care, going to the grocery store or pharmacy, picking up take-out food, or receiving deliveries. If you do leave home, practice social distancing by staying 6 feet away from others and wearing a face covering.
- **Don't have gatherings in your home with anybody outside of your household.**
- Comply with all Governors Orders, including orders requiring face coverings, limiting gatherings, and mandating early closure of businesses.
- Practice social distancing and avoid touching surfaces frequently touched by others when you're outside your home.
- Use remote modes of communication like phone or video chat instead of visiting friends or family.

Effective Monday, January 25th at 5:00am, the Stay at Home Advisory for the hours of 10pm – 5am is rescinded.



TOWN OF MARBLEHEAD

Board of Health

Todd Belf Becker, Chair
Helaine R. Hazlett
Michelle Gottlieb

(781) 631-0212

7 Widger Road

Marblehead, MA 01945

Andrew Petty, Director

Effective Monday, January 25th at 5:00am, the Mandatory Early Closure of Businesses Order requiring certain businesses to close by 9:30pm will be rescinded. On Monday, January 25th at 5:00am, the following businesses and activities listed below may operate past 9:30pm:

- Restaurants
- Arcades & Other Indoor & Outdoor Recreation (Phase 3, Step 1 businesses only)
- Indoor and Outdoor Events
- Movie Theaters and Outdoor Performance Venues
- Drive-In Movie Theaters
- Youth and Adult Amateur Sports Activities
- Golf Facilities
- Recreational Boating and Boating Businesses (e.g. charter boats)
- Outdoor Recreational Experiences
- Casinos and Horse Tracks/Simulcast Facilities
- Driving and Flight Schools
- Zoos, Botanical Gardens, Wildlife Reserves, Nature Centers
- Close Contact Personal Services (e.g. hair and nail salons)
- Museums/Cultural & Historical Facilities/Guided Tours
- Gyms/Fitness Centers and Health Clubs
- Indoor and Outdoor Pools
- Gatherings may go beyond 9:30pm
- Liquor stores and other retail establishments that sell alcohol may sell alcohol past 9:30pm; adult use cannabis retailers may also sell cannabis after 9:30pm
- *Note – Phase 3, Step 2 businesses must remain fully closed*

All travelers arriving to Massachusetts – including returning residents, who do not meet an exemption, are required to self-quarantine for 10 days or produce a negative COVID-19 test result, except travelers from Hawaii. If you had close contact with a person who has been diagnosed with COVID-19, get tested, self-quarantine (stay home) and monitor your health for symptoms of COVID-19 for 14 days after your last contact (even if you have a negative test result).

Learn where you will fit into the COVID-19 vaccine distribution timeline.

The Baker-Polito Administration and the Department of Public Health developed a vaccine distribution timeline after extensive consultation with the [Massachusetts Vaccine Advisory Group](#), made up of leaders from health care, the faith community, community organizations, local government, and others.

The timeline reflects several priorities: protecting our most vulnerable, maintaining health care system capacity, and addressing inequities in health care access and COVID-19 burden.

Vaccine distribution in MA will occur in a phased approach:



TOWN OF MARBLEHEAD

Board of Health

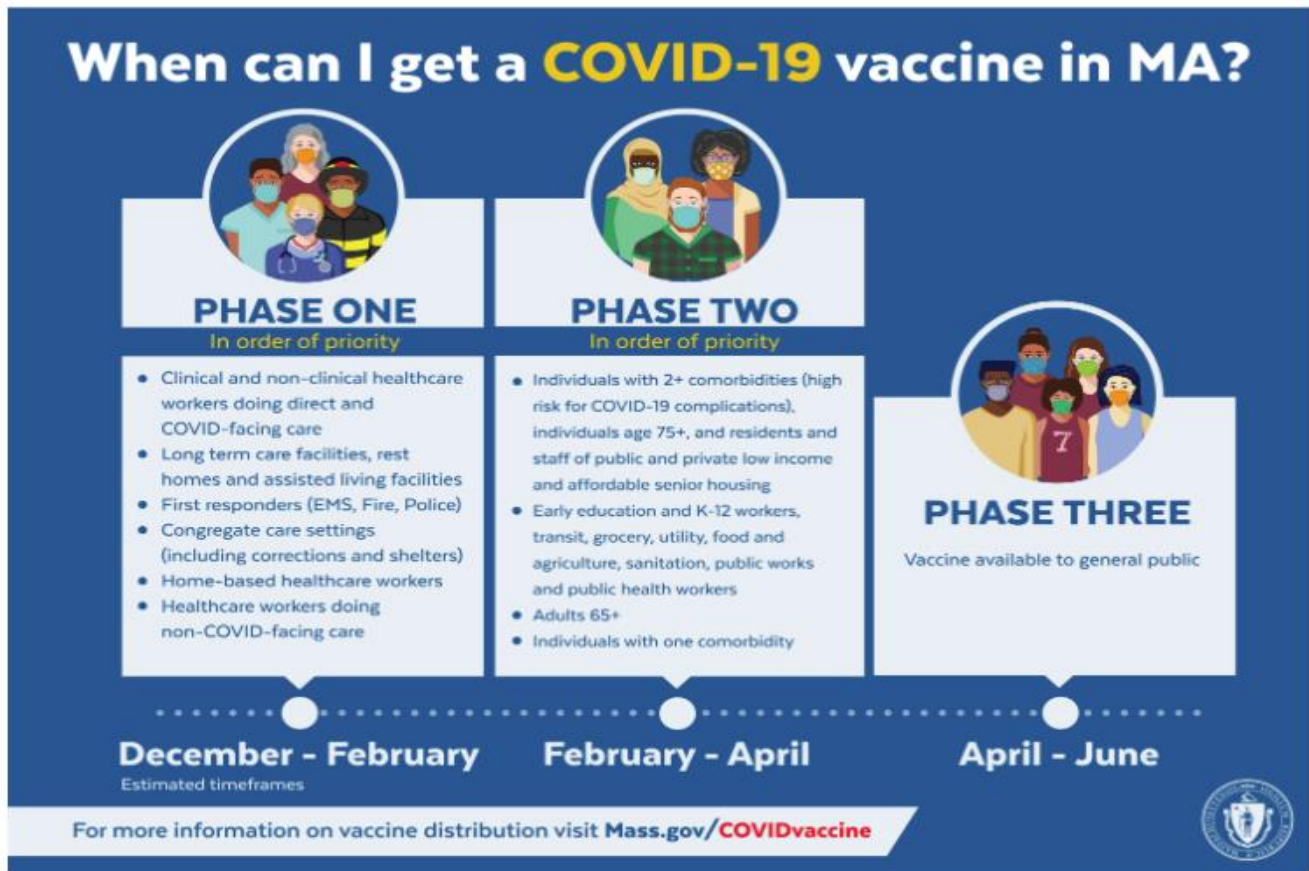
Todd Belf Becker, Chair
Helaine R. Hazlett
Michelle Gottlieb

(781) 631-0212

7 Widger Road

Marblehead, MA 01945

Andrew Petty, Director



This list will be updated Tuesdays and Thursdays by 5pm in response to questions submitted via COVID-19-Vaccine-Plan-MA@mass.gov



TOWN OF MARBLEHEAD

Board of Health

Todd Belf Becker, Chair
Helaine R. Hazlett
Michelle Gottlieb

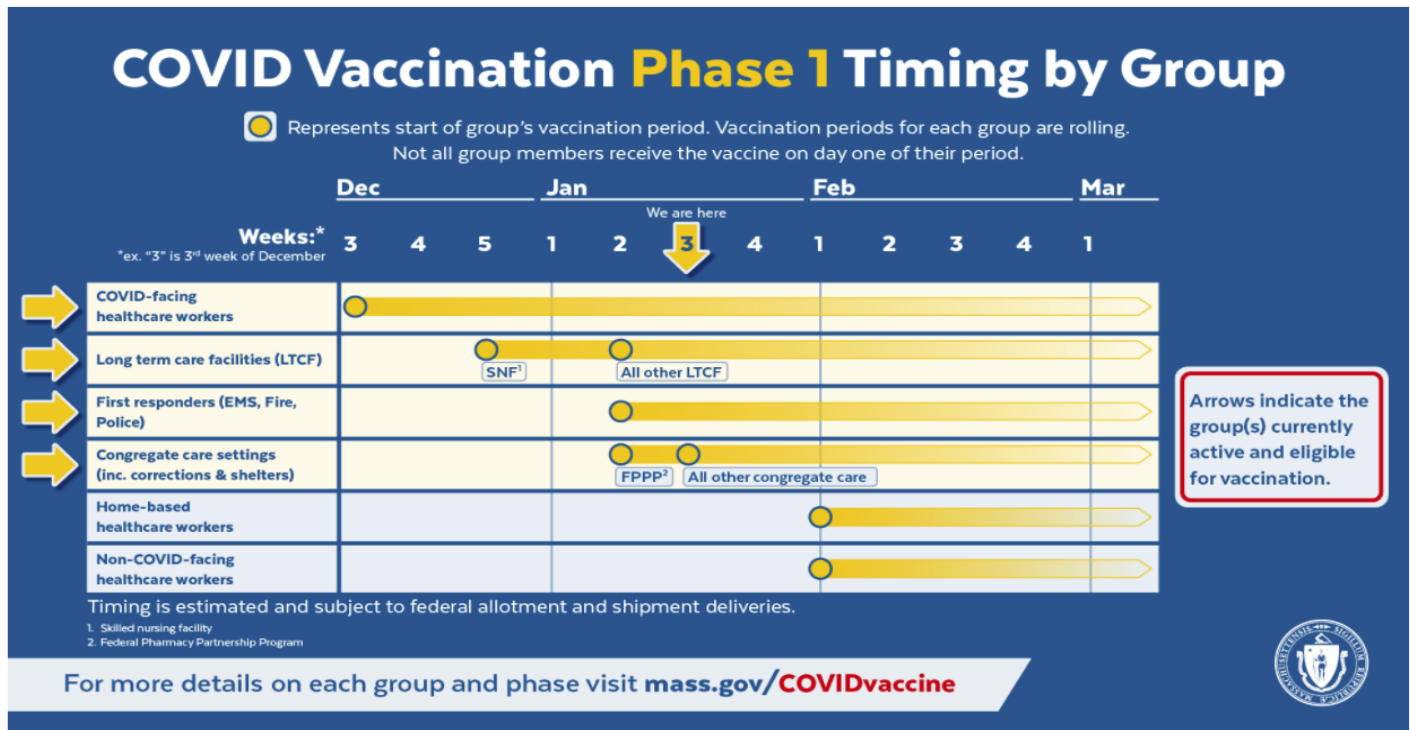
(781) 631-0212

7 Widger Road

Marblehead, MA 01945

Andrew Petty, Director

Overview and Current Status



COVID-19 Vaccine Updates

- **NEW** Residents and staff of low-income and affordable **senior housing** added to first priority in Phase 2
- **NEW** COVID-19 Vaccine Locations for Health Care Workers <https://www.mass.gov/info-details/covid-19-vaccine-locations-for-health-care-workers>
- **NEW** COVID-19 Vaccinations for Congregate Care Settings <https://www.mass.gov/info-details/covid-19-vaccinations-for-congregate-care-settings>
 - Vanity URL: [Mass.gov/congregatecarevaccine](https://mass.gov/congregatecarevaccine)
- **NEW** COVID-19 Vaccinations for Senior Housing Settings <https://www.mass.gov/info-details/covid-19-vaccinations-for-senior-housing-settings>
- **NEW** COVID-19 vaccine locations for individuals currently eligible to be vaccinated <https://www.mass.gov/info-details/covid-19-vaccine-locations-for-individuals-currently-eligible-to-be-vaccinated>
- When can I get the COVID-19 Vaccine? <https://www.mass.gov/info-details/when-can-i-get-the-covid-19-vaccine>
- COVID-19 Vaccine Distribution Phases (timing by group) <https://www.mass.gov/info-details/when-can-i-get-the-covid-19-vaccine#overview-and-current-status->
- Stop COVID-19 Vaccine Graphics (includes first responders, general, and vaccine timeline graphics): <https://www.mass.gov/info-details/stop-covid-19-vaccine-graphics>
- Email Address to send vaccine questions: covid-19-vaccine-plan-ma@mass.gov
- Guidance for health workers who have been vaccinated <https://www.mass.gov/info-details/massachusetts-covid-19-vaccine-program-mcgv-guidance-for-vaccine-providers-and>



TOWN OF MARBLEHEAD

Board of Health

Todd Belf Becker, Chair
Helaine R. Hazlett
Michelle Gottlieb

(781) 631-0212

7 Widger Road

Marblehead, MA 01945

Andrew Petty, Director

Additional Information can be found at the following links

Daily Dashboard Mass.gov

www.mass.gov/info-details/covid-19-response-reporting#covid-19-daily-dashboard

COVID-19 Weekly health Report

www.mass.gov/info-details/covid-19-response-reporting#covid-19-weekly-public-health-report

Positive COVID cases in Schools

www.doe.mass.edu/covid19/positive-cases/

Resources & hotlines

- [Create a profile and sign-up for COVID-19 alerts](#) by text, email, or phone call in your preferred language.
- [Call 2-1-1](#) or use [live chat](#) for non-emergency questions and help
- Call [Crisis Counseling Assistance Program](#) | (888) 215-4920
- [Email](#) the Governor's Office or call (617) 725-4005

Abuse & assault

- Domestic violence and sexual assault:
 - Massachusetts | [Call SafeLink](#) at (877) 785-2020 or access [SafeLink live chat](#). For deaf and hard-of-hearing call (877) 785-2020, or by TTY at (877) 521-2601
 - [Download SafeLink flyers](#) to post on the wall or use in Social Media.
 - National | Call Domestic Violence 24/7 Crisis Hotline at (800) 799-7233
 - National | Call Sexual Assault 24/7 Crisis Hotline at (800) 656-4673
- Child abuse or endangerment:
 - Mon - Fri, 8:45 a.m. - 5:00 p.m. | [Find and call your local DCF office](#)
 - Sun - Sat, 5:00 p.m. - 8:45 a.m. | Call Child-At-Risk hotline at (800) 792-5200

Nursing homes

- Call [Nursing Home Family Resource](#) line at (617) 660-5399

Weekly Case report will now come out on Friday morning after 9am, to be more in line with the state